

## Main Technical Guide

### 6-in-1 BOOSTER PRO

BOOSTER PRO is a glass glow device with six key functions to help you achieve your skin goals. This revolutionary device delivers visible improvements in radiance, volume, elasticity, pore refinement, and sonic vibration.

### Product Information

#### Operation Instructions

01. Press and hold the ① Power Button for 2-3 seconds to turn on the product. When the power is turned on, the ② LCD Screen will light up with an ON sound effect, and it will automatically be set to Booster Mode at level 1.

02. Briefly press the ④ Mode Button once to select the desired mode. Each press of the ④ Mode Button will display the mode on the ② LCD Screen, and with each mode change, the mode-specific LED color will be displayed on the ⑤ Color LED Display along with mode guidance voice.

\*The modes change in the following order:

Booster Mode → MC Mode → Derma Shot Mode → Air Shot Mode

03. After setting the mode, press the ③ Level Button briefly once to adjust the level.

With each button press, the level will increase by one, and the adjusted level will be displayed on the ② LCD Screen. \*You can set it from level 1 to 5, and it is recommended to start with level 1 when using it for the first time.



### Get the most out of your BOOSTER PRO

Download the AGE-R app for free right now and experience the AGE-R BOOSTER PRO in a more professional and convenient way.

\*Scan the QR code or search for 'AGE-R' in the app store.

04. Once you have set the mode and level, use the product according to the specific instructions for each mode. Before using, be sure to familiarize yourself with the instructions for each mode.

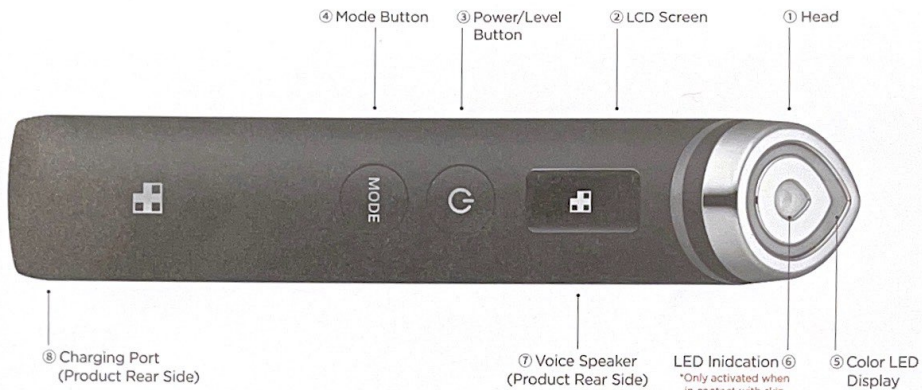
05. During use, the usage time will be announced every minute. If you use the product for over 5 minutes, it will display a waiting screen for mode change on the ② LCD Screen along with a completion announcement. If no button or app operation is performed within 10 seconds, it will automatically shut down. If you want to use the next mode, press the ④ Mode Button briefly once within 10 seconds to change the mode.

06. For hygienic use, after using, be sure to clean the ① Head thoroughly with a dry cloth or cotton pad and store it.

07. Charging can be done by connecting the included Type-C charger to the ⑧ Charging Port on the bottom rear side of the product.

\*During charging, the charging status will be displayed on the ② LCD Screen along with a charging connection sound, and the product will not operate.

01



02

## Main Mode Overview

\*Before use, be sure to familiarize yourself with the usage methods and recommended frequency for each mode.

### BOOSTER MODE | Orange LED



#### Radiance Booster Mode

Can be used with various types of skincare products and face masks by rolling on the skin.

**Recommended Frequency** 1-3 times daily (5-10 minutes per session)

#### Usage Instructions

Apply the skincare product and use the device with an upward motion from the inside to the outside of the face.

### DERMA SHOT MODE | Red LED



#### Elasticity Derma Shot Mode

Can be used with various types of skincare products and face masks to relax facial muscles.

**Recommended Frequency** 1-3 times daily (5-10 minutes per session)

#### Usage Instructions

Apply an appropriate amount of skincare product and move slowly across the skin. Pause for 2 seconds at muscle points to relax the muscles.

### MC MODE | Green LED



#### Line MC Mode

Can be used with skincare products and face masks to volumize the appearance of lines.

**Recommended Frequency** 1-3 times daily (5-10 minutes per session)

#### Usage Instructions

Apply the skincare product and use the device with an upward motion from the inside to the outside of the face.

### AIR SHOT MODE | Blue LED



#### Pores Air Shot Mode

Can be used on dry skin for pore and dead skin cell care.

**Recommended Frequency** 2-3 times a week (5 minutes per session)

#### Usage Instructions

After cleansing and drying the skin, gently glide the head's edge over the face.

03

### Mode Sequence

\*If different modes are being used on the same day, it is recommended to follow this sequence.



Recommended Usage: 2-3 times a week

Recommended Usage: 1-3 times daily

### LED INDICATION

\*LED colors for each mode are preset, and LED color changes can only be made through the AGE-R app.



### Product Components

Main Unit, USB Charging Cable, User Manual

### Precautions Before Use

\*When using the product for the first time, start with the lowest setting and adjust as needed during use.



#### Prohibited Areas of Use

Do not use on the uvular area, open wounds, or areas where procedures or surgeries have been performed.



#### Recommended Areas for Low-Level Use

For sensitive areas such as the eyes, nose, and mouth area, it is recommended to use at a low level.



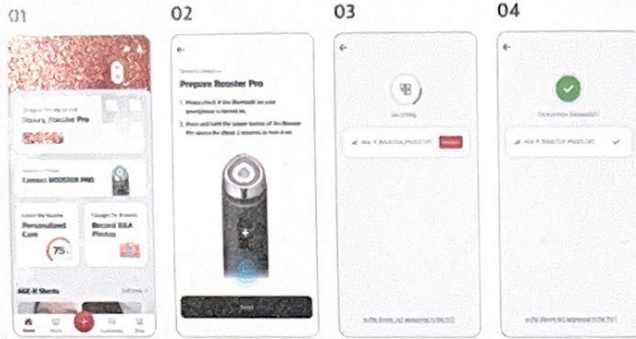
#### Usage Frequency

Please use the recommended frequency for each mode.

04

## Bluetooth Connection Instructions

\*Make sure your smartphone's Bluetooth is turned on and the BOOSTER PRO is powered on to establish a connection.



- ① Access the AGE-R app and click on "Connect BOOSTER PRO".
- ② Turn on Bluetooth on your smartphone and power on the BOOSTER PRO.
- ③ After confirming the detected device, click on the "Connect" icon.
- ④ Verify that the "Connection Successful" screen and the Bluetooth connection sound from BOOSTER PRO are displayed correctly.

## Precautions When Connecting via Bluetooth

### 01. Remote Control

- The Remote Control feature operates only when connected with the device, and functions such as LED color change, volume control, and vibration ON/OFF are available only within the Remote Control feature after Bluetooth connection.  
- The volume level and vibration ON/OFF settings you configure in Remote Control will be saved as default values, but LED color changes will not be saved.

### 02. Automatic Reports

- Usage history when the device is used without being connected to the app is temporarily stored in the device and will automatically upload to the app's reports when connected.  
- The intensity level in the report and mode-specific LED colors are saved as the longest used level and color.

### 03. Default LED Color Changes for Each Mode

- Changing the default LED color for each mode is possible only when the device is connected and can be done in the "Settings" tab.

### 04. Device Connection Failure

- Ensure that the device is not connected to another smartphone. If it is connected to another smartphone, disconnect it from the connected smartphone's app by going to [BOOSTER PRO Banner] → [Settings] → [Device Disconnect], and then try again.

### 05. Switching to a Different Smartphone

- If you want to connect the device to a different smartphone, first run the app on the currently connected smartphone. Go to [BOOSTER PRO Banner] → [Settings] → [Device Disconnect] to disconnect it, and then try connecting it to the new smartphone.



Only Available When Bluetooth is Paired

•Mode-Specific Color Changes •Sonic Vibration ON/OFF •Volume Control •Checking Care Reports

05

## LCD Screen Overview



### Default Screen

- |  |  |
|--|--|
| ① Bluetooth Indicator  | ② Battery Indicator                                |
| Bluetooth Disconnected   | Remaining Battery                                  |
| Bluetooth Connected<br><small>*Integrated with dedicated AGE-R app</small> | Low Battery<br><small>(*Requires Charging)</small> |
| ③ Current Usage Mode   | ④ Intensity Level                                  |
| ⑤ Care Time  |  |



### Screen While Awaiting Mode Change After 5-Minute Care

- ① Automatic Shutdown Countdown  
 Will automatically shut down after 10 seconds if no button operation is performed.
- ② Additional Care Guidance  
MODE button and app operation can be used to change to a different mode.

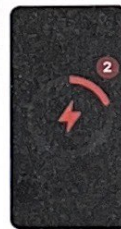


### Charging Screen

- ① Charging Screen  
Displayed in green, allowing you to check the charging status.  
(\*Does not operate during charging)

### ③ Fully Charged Screen

- ③ Fully Charged Screen  
 The entire ring is displayed in green.



### Low Battery Screen

- ② Low Battery Screen  
Displayed in red when the battery is low, indicating that charging is required.

06

## Precautions During Use and Storage

### Precautions During Use

01. Be careful not to drop or shock the device, as it may cause malfunction or damage.
02. Ensure that no water or cosmetics enter the inside of the main unit.
03. If the product is not operating correctly, do not disassemble it; instead, contact customer support.
04. Remove all metal accessories in contact with the user's body.
05. Do not use the device in conjunction with electrical appliances such as electric heating pads.
06. Do not use the device in hot places such as near fire or direct sunlight, and do not place the main unit or cable near heating appliances.
07. Do not keep it fixed on one area for an extended period during device use; make sure to move it continuously.
08. Be cautious when using the device, as it may malfunction if it comes into contact with other products.
09. Do not use the device for purposes other than its original intention; it may lead to accidents.
10. Do not use this device if you regularly suffer from paralysis or have difficulties expressing yourself.
11. Do not tap the head that contacts the skin directly on hard surfaces; it may lead to accidents.
12. Do not strike or drop the main unit on hard objects.
13. Avoid using the device in high temperature, high humidity, or dusty environments, such as bathrooms, kitchens, and hot cars.
14. When using, maintain a distance from electrical appliances such as other beauty devices, TVs, and radios.
15. Do not use on uvular area, wounds, or areas where procedures or surgeries have been performed.
16. Do not use the device at voltages other than the rated voltage. Using it where the rating is exceeded can cause heat generation, leading to fires, electric shock, or malfunction.
17. Do not handle the device or detach the charging cable with wet hands; it can lead to electric shock.
18. Do not attempt to repair, disassemble, or modify the main unit yourself; it can cause malfunctions.
19. The device will not operate while charging.
20. For accurate skin recognition, please grasp the main part of the device as if surrounding it.
21. Children should be supervised to ensure that they do not play with the appliance.

22. The appliance is not to be used by persons (including children) with reduced physical, sensory or mental capabilities, or lack of experience and knowledge, unless they have been given supervision or instruction.

### Storage Precautions

01. Store in a place out of the reach of children and away from moisture.
02. Do not store in places where magnetic fields or electro magnetic waves are generated; it may cause malfunctions.
03. After use, clean the head with a wet wipe, clean cloth, or soft towel and store it dry.
04. Ensure that the device's power is turned off before storage.
05. Do not use flammable substances such as gasoline or benzene for cleaning, as it can cause chemical reactions, discoloration, and deformation.

### User Precautions

If you have poor health, have consumed alcohol, are currently taking sleeping pills, are fatigued, or are under medical treatment, please do not use the device. If you experience pain or unusual symptoms during use, discontinue use immediately.

Repeated use of the device on the same area or improper usage may cause damage to the skin. If any abnormality appears on the skin, cool the affected area and consult a medical professional immediately. \*Even in regular use, individuals with sensitive skin may experience slight redness. Please read the instructions and precautions carefully and perform proper aftercare.

### Do not use the device if you have the following conditions:

01. Individuals with symptoms of redness and stinging due to excessive sun tanning
02. Individuals with allergies, especially those with sensitive skin
03. Individuals using electronic devices worn directly inside the body, such as cardiac pacemakers
04. Individuals using electronic medical devices for life support, such as artificial heart-lung machines
05. Individuals using implanted electronic medical devices such as electrocardiogram devices
06. Individuals using steroid-based hormone medications for an extended period
07. Individuals with liver function disorders who have symptoms of vascular dilation syndromes in the circulatory system

07

08. Individuals undergoing outpatient treatment  
 09. Areas with inflamed acne  
 10. Areas with dermatitis caused by cosmetics, or individuals with atopic dermatitis  
 11. Areas with blemishes accompanied by itching, or areas with blemishes caused by physical irritation  
 12. Areas with metal, plastic, silicone, or other foreign objects inside the body  
 13. Patients with blood disorders, heart diseases, acute illnesses, bleeding areas, malignant tumors, fractures, infectious diseases, eyelids, trauma areas, skull areas, and other children, pregnant women, breastfeeding women, and elderly individuals  
 \*This product is intended for cosmetic use only. It is not intended to diagnose, treat, cure or prevent any medical condition or disease. Please read all instructions and warnings before use. Use only as directed. Always consult with a healthcare professional if you have any medical concerns or conditions before using the device.

**Specification**

**Model Name** ME-BPRO **Product Name** MEDICUBE AGE-R BOOSTER PRO  
**Seller** APR US INC **Contact Number** 1577-0719  
**E-mail address** medicube\_uscs@apr-in.com  
**Address** 41 GREENFIELD, IRVINE CA 92614  
**Manufacturer** APR Factory Co., Ltd.  
**Address** 2nd Floor, 107 Gasan Digital 2-ro, Geumcheon-gu, Seoul, South Korea (Gasan-dong)  
 50, Wonseokjeongyongso-gil, Poseung-eup, Pyeongtaek-si, Gyeonggi-do, Republic of Korea  
**KC Certification Registration No.** R-R-pg1-ME-BPRO  
**FCC ID Number** 2AC7Z-ESPS3WROOM1  
**Intended Use** Facial Beauty Massaging Device

**Battery Specifications**

**Quality Indication in accordance with the Electrical Appliances And Consumer Products Safety Control Act Safety Confirmation Report No.** YU101535-23001

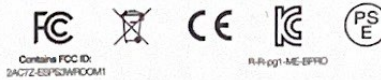
**Model Name:** DTP18650-26F  
**Product Name:** Battery (Li-Ion Cylindrical Rechargeable Battery) **Rated:** 3.7V / 2,600mAh  
**Manufacturer Name:** Shenzhen Data Power Technology Ltd. **Country of Manufacture:** China  
**Manufactured Date:** Indicated separately at the bottom of the product

**Product Specifications**

**Product Size:** 1.34\*6.98 inches (34\*177.3 mm) **Input Voltage:** DC 5V / 2A (USB-C)  
**Battery:** 3.7V / 2,600mAh Lithium-Ion **Power Consumption:** max. 1.8 Watt (3.7V x 0.5A)  
**Weight:** 0.34 lbs (155 g) **Charging Time:** Approximately 4 hours  
**MADE IN KOREA**

This device complies with part 15 of the FCC Rules. Operation is subject to the following two conditions:

(1) This device may not cause harmful interference, and (2) this device must accept any interference received, including interference that may cause undesired operation.



This device has been tested and found to comply with the limits for a Class B digital device, pursuant to Part 15 of the FCC Rules. These limits are designed to provide reasonable protection against harmful interference in a residential installation. This equipment generates, uses and can radiate radio frequency energy and, if not installed and used in accordance with the instructions, may cause harmful interference to radio communications. However, there is no guarantee that interference will not occur in a particular installation. If this equipment does cause harmful interference to radio or television reception, which can be determined by turning the equipment off and on, the user is encouraged to try to correct the interference by one or more of the following measures:  
 - Reorient or relocate the receiving antenna.  
 - Increase the separation between the equipment and receiver.  
 - Connect the equipment into an outlet on a circuit different from that to which the receiver is connected.  
 - Consult the dealer or an experienced radio/TV technician for help.

**FCC Note Caution:**

Changes or modifications not expressly approved by the party responsible for compliance could void the user's authority to operate the equipment.

**Exchange / Return Policy**

**1. Warranty**

For all Age-R devices, we offer a 1 year limited warranty period from the date of your original purchase. If your device does not work properly due to a manufacturer's defect, we will replace the defective device free of charge within 1 year. This warranty does not cover the devices damaged by: 1) Accident, misuse, or alteration 2) Use with unauthorized accessories or use other than instructed. 3) Connecting to incorrect current and voltage (We only provide C-type USB cable) This warranty only extends if the devices are used in conjunction with authorized device accessories (such as the enclosed charging cables).

**2. Returns**

For the Age-R devices, all returns must be initiated within 30 days of receiving your order. Please refer to the information as shown below. **Simple Remorse:** A refund due to a change of mind is only applicable within 30 days of receiving and will only be accepted if the product is returned in original, sealed, and unopened condition. \*In the case of a return for simple remorse (change of mind), the customer needs to bear the shipping fee. For international orders: You will be responsible for paying for customs fee and returning shipping fee. Additionally, we cannot provide free return shipping labels for international customers.

**Damaged or defective product:** 1) Please reach out to us via our Customer Service Center email with the following details: First name and last name, email address, phone number, order number. Kindly attach a photo or video describing your issue. 2) We will proceed to issue a confirmation email for you (please note that our Customer Service usually takes 2-3 business days to respond).

3) After receiving a confirmation email, please send the product back to our warehouse via the return address. You will be informed of the return address after the email confirmation. 4) Once the product has arrived at our warehouse, our staff will inspect the condition of the product. 5) In case of product defect, we will proceed to exchange and send a new product to you.

\*Note: This process may take up to 1 month, including the time taken to ship the product back to our warehouse, and the time taken to inspect the product.

**Subject of Recommendation of Lithium Battery Discarding and Charging Method**

**Warning:** Since it may accompany danger such as heating, fire, and explosion, please observe the following matters. **1) Handling Matters** Since a swollen battery that can be visually identified may be dangerous, immediately contact the manufacturer or the seller. Use only the designated charger. Keep away from fire (Do not put inside a microwave oven). Do not leave it inside a car in summertime. Do not store or use at high temperature and humid place such as sauna. Do not use it for a long time while placing it on blanket, electric pad, and carpet. Do not store at a sealed space while leaving the power on. Be cautious not to contact the electrical terminal with metal products such as necklace, coins, key, and watch. Use the secondary lithium battery warranted by the manufacturer. Do not implement behaviours such as disassembly, compressing, and penetrating. Do not apply abnormal impact such as dropping it from a high place. Do not expose to a temperature above 50 celcius. Do not contact with humidity. **2) Disposal Guideline** Do not arbitrarily dispose used up battery. When disposing the battery, do not incinerate or put it inside a fire. Explosion and fire may occur due to heat. The method of battery disposal may vary according to countries and regions. Dispose with appropriate method. **3) Recommendations regarding Charging Method** Do not charge the battery with the method other than the one shown in the user manual. Fire or explosion may occur.

**Complete Charge Time : About 4 hours**

\*Charge time may vary depending on the battery remnant amount of portable battery or surrounding temperature or charging environment. It may change without notice for performance improvement in specifications and exterior appearance.

Please read the user manual and instructions.  
 The images in the manual are for demonstration purposes only.

Copyright © 2024, APR Corp.  
 All Rights Reserved.

medicube.us